

Stereo Sight Test

Martin Birkmeier

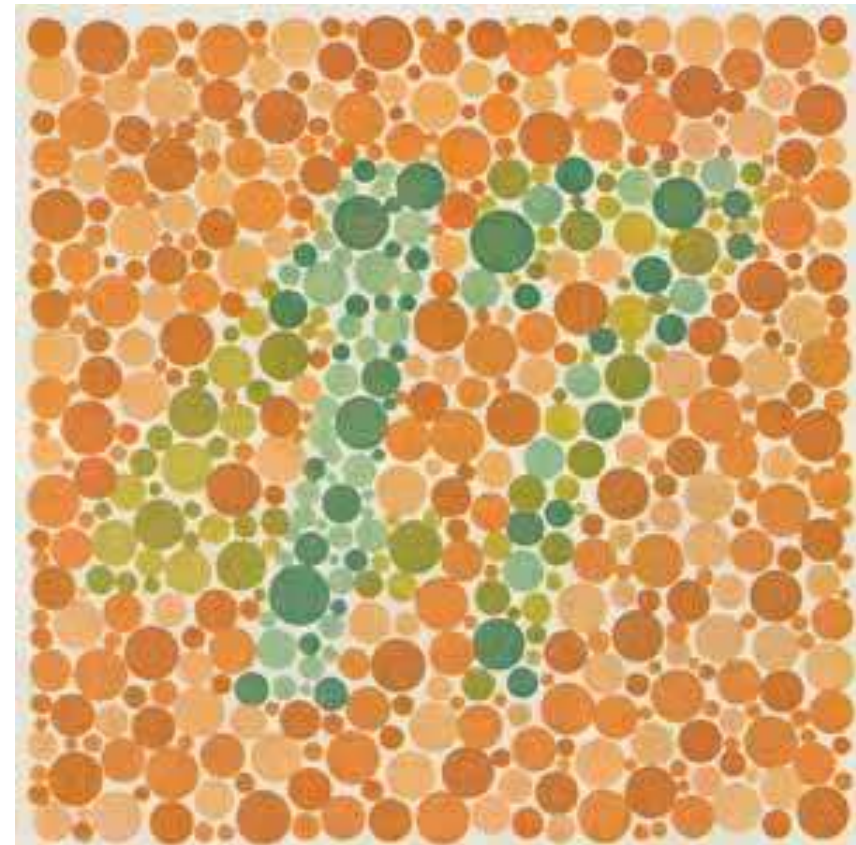
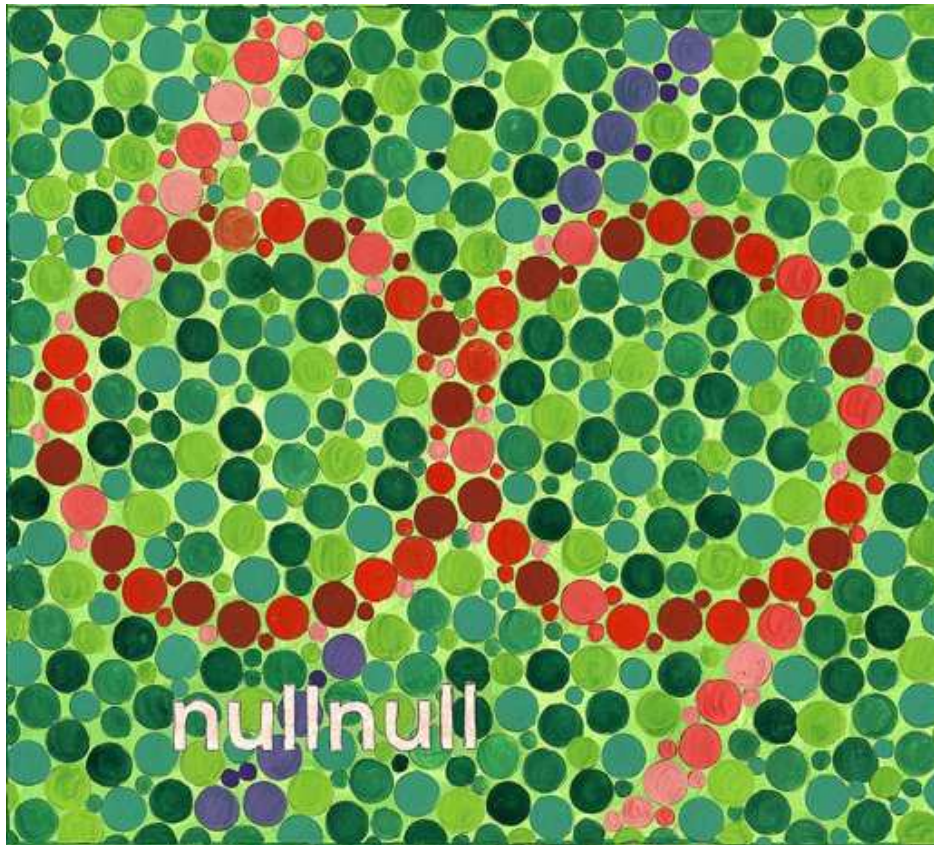
Basically a Lang test

- Check for Colorblindness
- Check for Stereo Sight

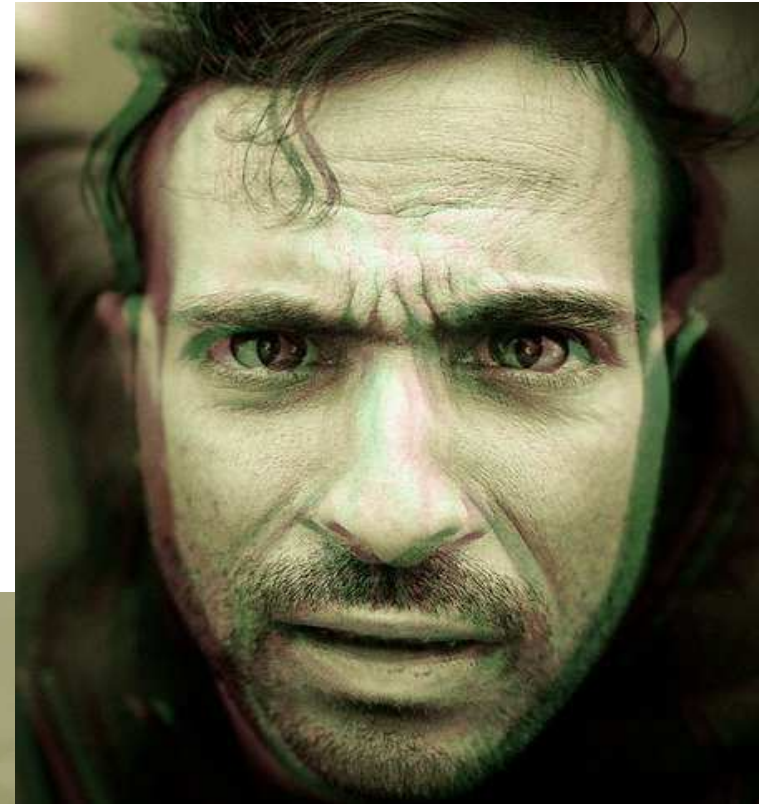
Red Green Glasses

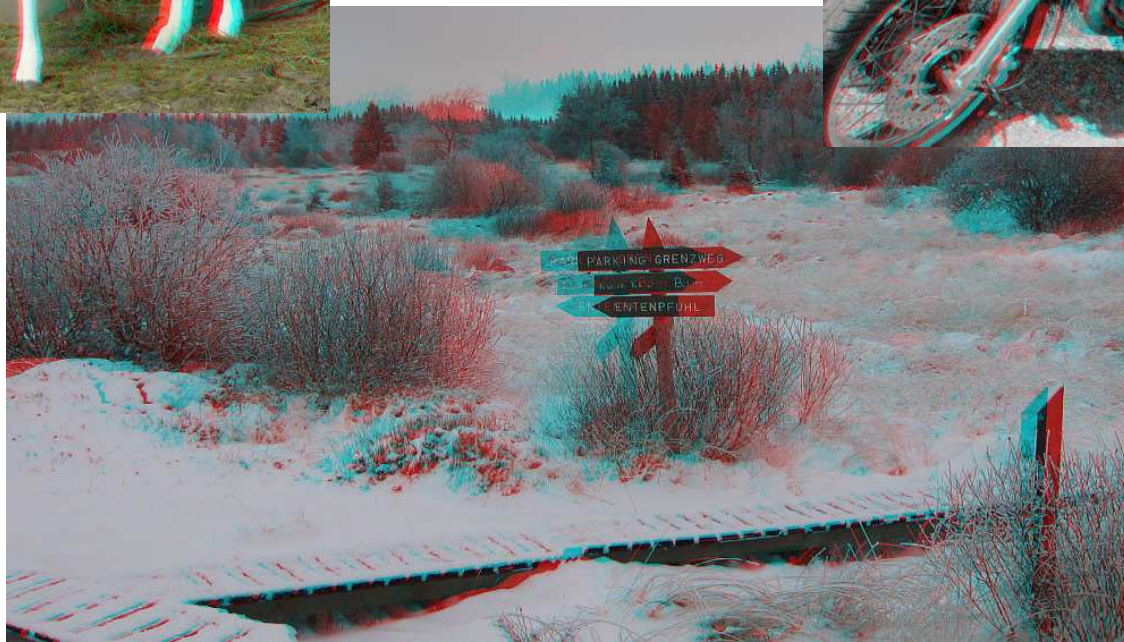
Minimum View Distance 50cm

Color Test

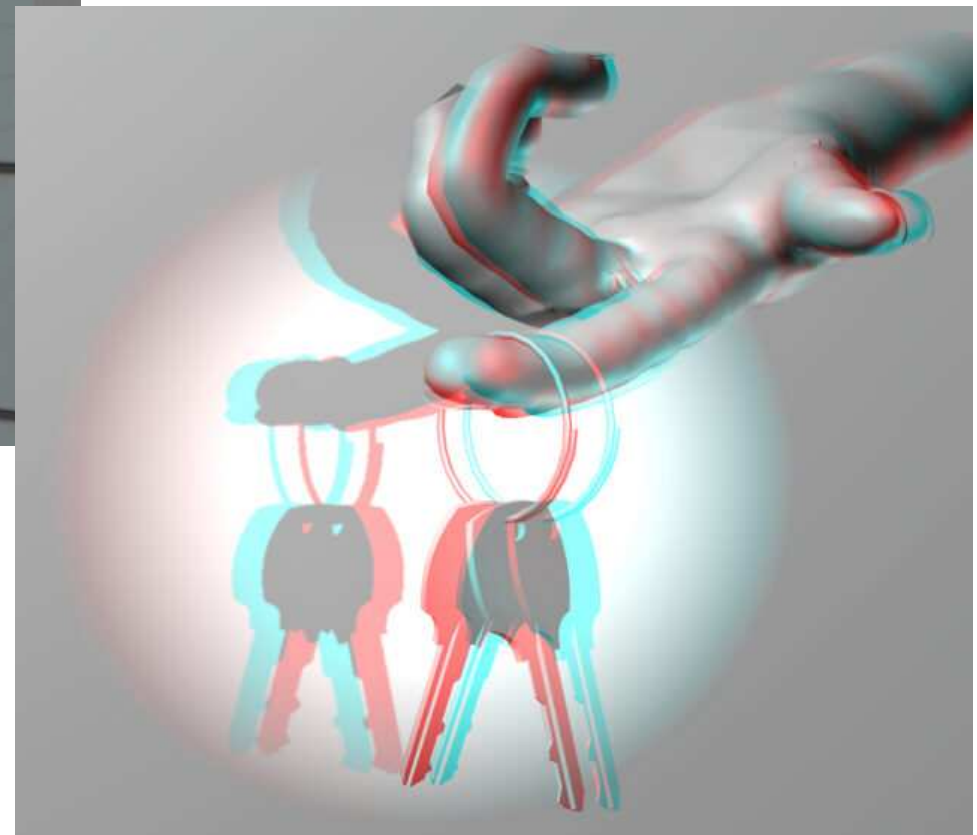
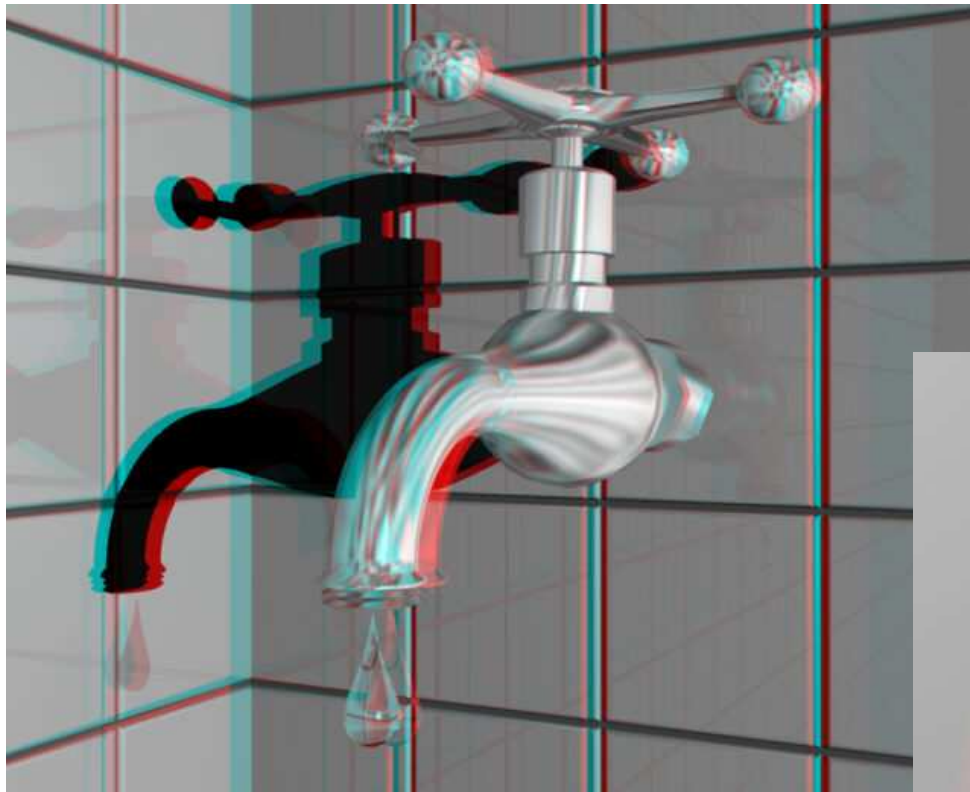












Solution

Sheet 1: Dinosaur Right Side

Sheet 2: Looking glass Left Side

Sheet 3: All three Pictures

Sheet 4: Rose Left Side

Sheet 5: both, should be perceived in front of screen.

Sheet 3 is a test if someone recognize the false images by color

Sheet 4 is a test if someone tries to remember (again a rose, again a motorcycle)

Sheet 5 is just for fun both pictures should stick out of the screen